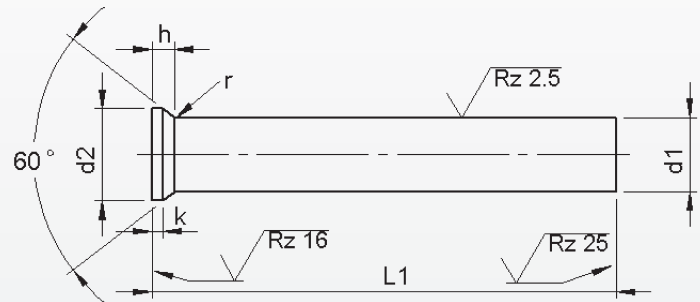
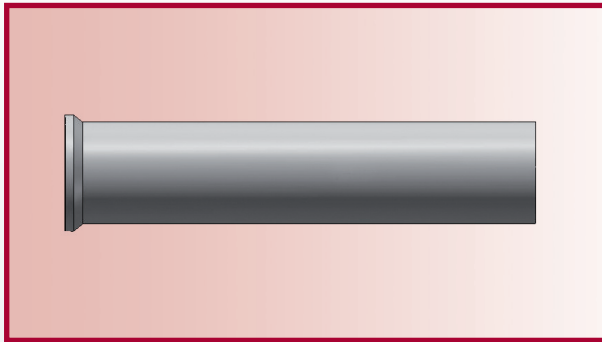


Schneidstempel DIN 9861 HWS



Werkstoff: HWS (1.2379)
Härte: Schaft: 62 ±2 HRC
 Kopf: 50 ±5 HRC

PRODUKT LAUFT AUS

| d ₁ | h6 | d ₂ | k | l ₁ ^{+0.5} ₀ | | | | | | |
|----------------|----|----------------|-------|---|-------|-------|-------|-------|-------|-------|
| | | | | 71 | 80 | 90 | 100 | 120 | 150 | |
| | | | | Preis pro Stück in EURO | | | | | | |
| 13.5 | + | 14.0 | 1.5 | 7,00 | 7,75 | 8,75 | 9,85 | 14,00 | 21,00 | |
| 14.5 | + | 15.0 | | 16.0 | 8,40 | 9,25 | 10,55 | 11,80 | 16,75 | 25,15 |
| 15.5 | + | 16.0 | | 18.0 | 9,35 | 10,35 | 11,70 | 13,10 | 18,65 | 28,00 |
| 16.5 | | 19.0 | 2.0 | 9,70 | 10,65 | 12,10 | 13,60 | 19,35 | 29,05 | |
| 17.0 | | 19.5 | | 9,70 | 10,65 | 12,10 | 13,60 | 19,35 | 29,05 | |
| 17.5 | | 20.0 | | 10,40 | 11,40 | 13,85 | 14,60 | 20,75 | 31,15 | |
| 18.0 | | 20.5 | | 10,40 | 11,40 | 13,85 | 14,60 | 20,75 | 31,15 | |
| 18.5 | | 21.0 | | 11,10 | 12,20 | 14,30 | 15,55 | 22,20 | 33,25 | |
| 19.0 | | 21.5 | | 11,10 | 12,20 | 14,30 | 15,55 | 22,20 | 33,25 | |
| 19.5 | | 22.0 | | 11,80 | 13,00 | 14,75 | 16,50 | 23,60 | 35,35 | |
| 20.0 | | 22.5 | | 11,80 | 13,00 | 14,75 | 16,50 | 23,60 | 35,35 | |
| 20.5 | | 23.0 | | 12,50 | 13,75 | 15,65 | 17,50 | 25,00 | 37,40 | |
| 21.0 | | 23.5 | | 12,50 | 13,75 | 15,65 | 17,50 | 25,00 | 37,40 | |
| 21.5 | | 24.0 | | 13,20 | 14,55 | 16,50 | 18,45 | 26,40 | 39,60 | |
| 22.0 | | 24.5 | | 13,20 | 14,55 | 16,50 | 18,45 | 26,40 | 39,60 | |
| 22.5 | | 25.0 | | 13,90 | 15,25 | 17,40 | 19,50 | 27,80 | 41,70 | |
| 23.0 | | 25.5 | | 13,90 | 15,25 | 17,40 | 19,50 | 27,80 | 41,70 | |
| 23.5 | | 26.0 | | 14,60 | 16,05 | 18,25 | 20,45 | 29,20 | 43,80 | |
| 24.0 | | 26.5 | 14,60 | 16,05 | 18,25 | 20,45 | 29,20 | 43,80 | | |
| 24.5 | | 27.0 | 15,30 | 16,85 | 19,15 | 21,45 | 30,60 | 45,90 | | |
| 25.0 | | 27.5 | 15,30 | 16,85 | 19,15 | 21,45 | 30,60 | 45,90 | | |

Zwischenabmessungen und andere Längen und Sonderwerkstoffe z.B. ASP, CPM und Vanadis sind kurzfristig auf Wunsch lieferbar.

Mehr- und Minderpreise:

- 1 Stück pro Abmessung + 50%
- 2-3 Stück pro Abmessung + 25%
- 25 Stück pro Abmessung - 5%
- 50 Stück pro Abmessung - 7%
- 100 Stück pro Abmessung - 10%