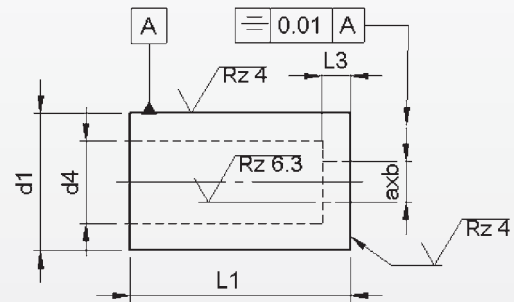
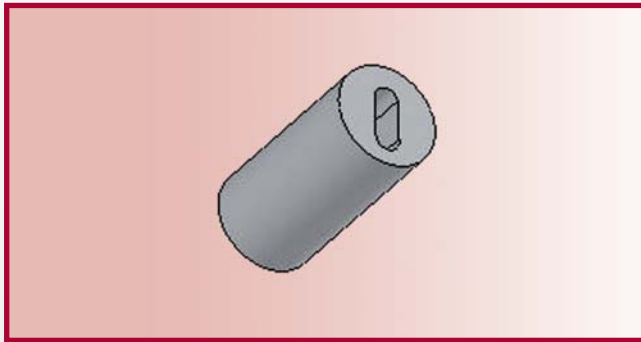


Die buttons type ED..

With shape-hole



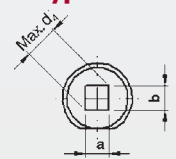
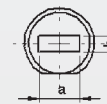
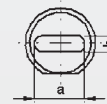
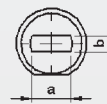
DISCONTINUED

type EDF

type EDO

type EDR

type EDS



Material: HWS (1.2379)
Hardness: Shaft: 64 ±2 HRC

d ₁	l ₃	axb		d ₄	l ₁ ^{+0.5} / ₀				
		b	a		19	25	30	32	
m5		≥	± 0.01	≤	Price by piece in EUROS				
6	1.6	1	-	3	3.5	31,50	31,50		
8	2	1	-	4	5	31,70	31,70	31,70	31,70
10	2.5	2	-	5	6.5	32,25	32,25	32,25	32,25
13	3	3	-	7	7.5	32,95	32,95	32,95	32,95
16	3	4	-	8	9	34,65	34,65	34,65	34,65
19	4	5	-	10	11	34,45	34,45	34,45	34,45
20	4	6	-	11	12	38,20	38,20	38,20	38,20
22	5	9	-	13	15	40,60	40,60	40,60	40,60
25	5	12	-	16	17		47,20	47,20	47,20
32	6	13	-	20	22			59,55	59,55
38	6	16	-	26	28			72,55	72,55
40	8	21	-	29	30			79,60	79,60
50	8	29	-	37	38			87,55	87,55
55	8	35	-	41	42			95,05	95,05

Cost of locking flat are 15% from total price of die button.

Without detailed specifications the locking is parallel to the major flat axis of surface 'a'.

Intermediate diameters, other lengths and special materials e.g. ASP, CPM and Vanadis, are available on request.

Extra charges and discounts:

- 1 Pieces per dimension + 50%
- 2-3 Pieces per dimension + 25%
- 25 Pieces per dimension - 5%
- 50 Pieces per dimension - 7%
- 100 Pieces per dimension - 10%