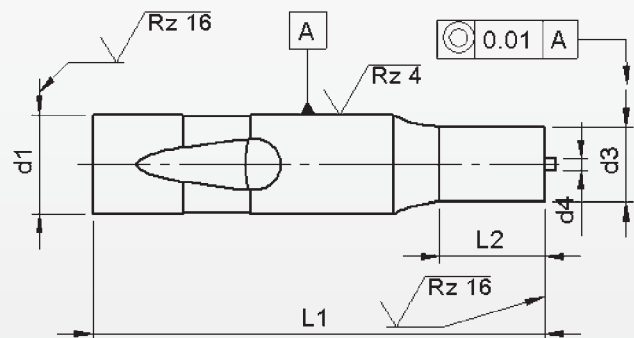
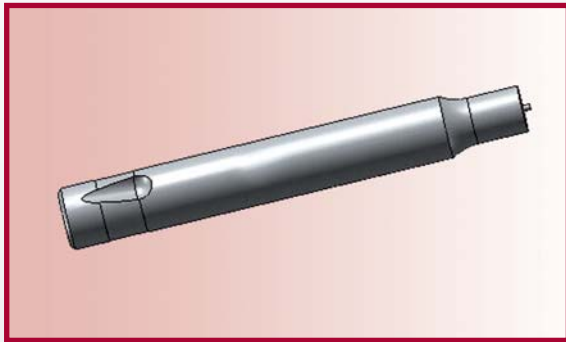


Ball-Lock punch type EBTP

With ejector with reduced shaft 'Round'



Material: HSS (1.3343)

Hardness: Shaft: 64 ±2 HRC

Head: 50 ±5 HRC

d ₁	d ₃		l ₂	l ₁ ^{+0.3} / _{+0.2}					
				63/71	80	90	100	125	
h5	≥	^{+0.5} / ₀	≤	Price by piece in EUROS					
6	3,0	—	5,9	10	21,00	21,60	22,30	23,30	24,70
10	5,0	—	9,9	17	24,65	25,45	26,50	27,50	29,85
13	9,0	—	12,9	17	27,60	28,60	29,85	22,20	34,10
16	12,0	—	15,9	17	32,95	33,35	34,80	36,45	39,95
20	16,0	—	19,9	17	47,55	39,15	41,00	43,00	47,30
25	20,0	—	24,9	17	44,30	46,35	48,60	51,05	56,45

Intermediate diameters, other lengths and special materials e.g. ASP, CPM and Vanadis, are available on request.

Extra charges and discounts:

- 1 Pieces per dimension + 50%
- 2-3 Pieces per dimension + 25%
- 25 Pieces per dimension - 5%
- 50 Pieces per dimension - 7%
- 100 Pieces per dimension - 10%