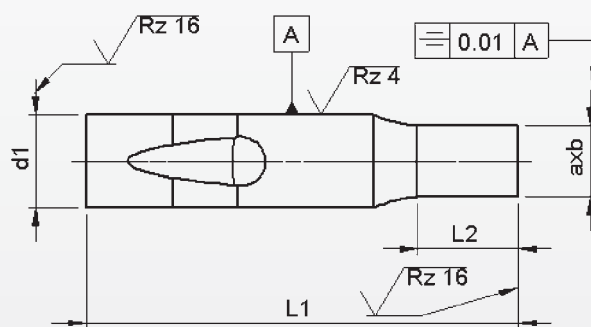
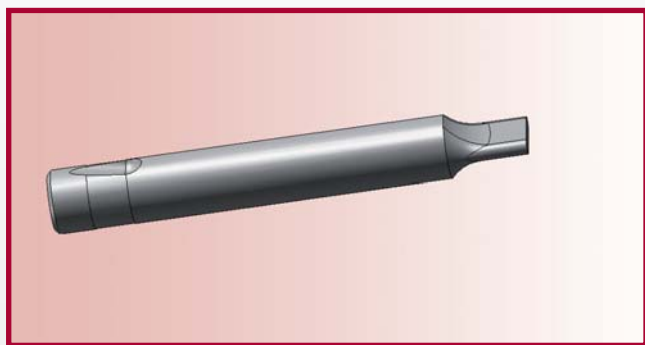
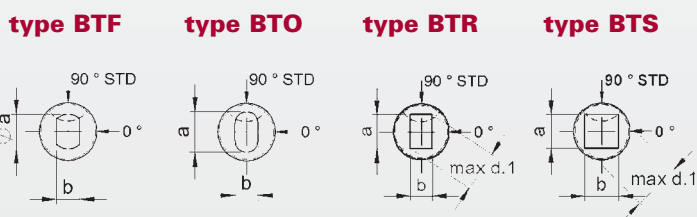


Ball-Lock punch type BT..

With reduced shaft 'Form'



Material: HSS (1.3343)
Hardness: Shaft: 64 ±2 HRC
 Head: 50 ±5 HRC



d ₁	axb			l ₂	l ₁ ^{+0.3} / _{+0.2}				
	b	±0.01	a		63/71	80	90	100	125
g ₅	≥	—	≤	+0.5 +0.0	Price by piece in EUROS				
6	3,0	—	5,9	10	23,55	24,15	24,85	25,65	27,25
10	5,0	—	9,9	17	31,20	32,00	33,50	34,05	36,40
13	9,0	—	12,9	17	33,50	34,50	35,75	37,10	40,00
16	12,0	—	15,9	17	36,00	37,40	38,85	40,50	44,00
20	16,0	—	19,9	17	49,40	51,00	52,85	54,85	59,15
25	20,0	—	24,9	17	58,60	60,65	62,90	65,35	70,75

Intermediate diameters, other lengths and special materials e.g. ASP, CPM and Vanadis, are available on request.

Extra charges and discounts:

- 1 Pieces per dimension + 50%
- 2-3 Pieces per dimension + 25%
- 25 Pieces per dimension - 5%
- 50 Pieces per dimension - 7%
- 100 Pieces per dimension - 10%