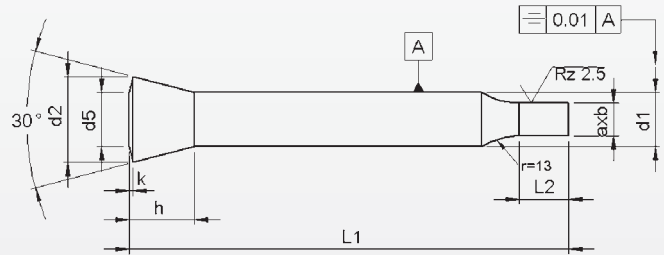
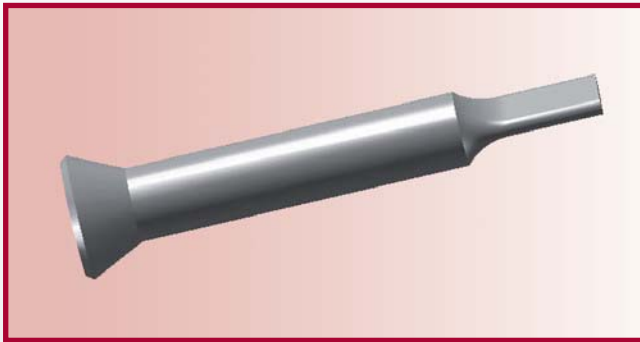


Punches with conical head 30°

With reduced shaft 'Form'

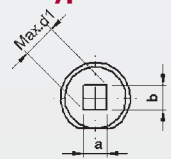
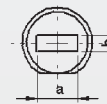
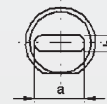
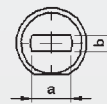


Type 30F

Type 300

Type 30R

Type 30S



Material: HSS (1.3343)
Hardness: Shaft: 64 ±2 HRC
 Head: 50 ±5 HRC

d ₁	axb			l ₂	l ₁ ^{+1.0} / ₀					
	b	a			71	80	90	100	120	Locking flat
h6	≥	± 0.01	≤	+ 0.5 0	Price by piece in EUROS					
4	1,6	—	3,9	10	21,50	22,05	22,95	23,80		3,95
5	2,5	—	2,4	10	21,50	22,10	22,75	23,40	24,95	3,95
6	3,0	—	2,9	10	22,35	23,05	23,75	24,55	26,30	3,95
7	3,0	—	6,9	10	23,55	24,35	25,20	26,15	28,25	5,25
8	4,0	—	7,9	13	30,15	31,05	32,05	33,15	35,60	5,25
9	4,5	—	8,9	13	31,35	32,25	33,25	34,35	36,80	5,25
10	5,0	—	9,9	17	32,55	33,70	34,95	36,35	39,40	5,25
11	5,0	—	10,9	17	33,85	35,00	35,25	37,65	40,70	5,25
12	6,0	—	11,9	17	35,20	36,60	38,20	39,90	43,70	5,25
13	9,0	—	12,9	17	36,20	37,60	39,20	40,90	44,70	5,25
14	9,5	—	13,9	17	37,25	38,75	40,20	21,90	45,70	5,25
15	10,0	—	14,9	17	38,25	39,95	41,85	43,90	48,55	5,25
16	12,0	—	15,9	17	39,25	40,95	42,85	44,90	49,55	5,25

Punches with key-flat against surcharge.

Without detailed specification the key-flat is parallel to the major axis of surface a.

Intermediate diameters, other lengths and special materials e.g. ASP, CPM and Vanadis, are available on request. See page 2 for extra charges and discount.

Extra charges and discounts:

- 1 Pieces per dimension + 50%
- 2-3 Pieces per dimension + 25%
- 25 Pieces per dimension - 5%
- 50 Pieces per dimension - 7%
- 100 Pieces per dimension - 10%