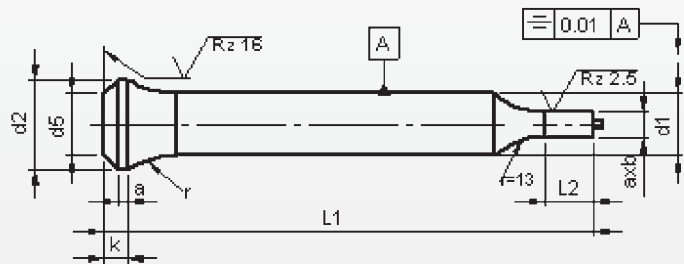


Punches with bottle neck type EP..

With ejector with reduced shaft 'Form'

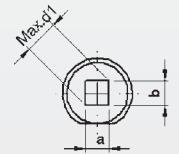
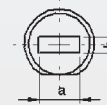
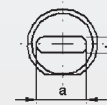
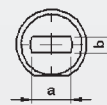


type EPF

type EPO

type EPR

type EPS



Material: HSS (1.3343)
Hardness: Shaft: 64 ±2 HRC
 Head: 50 ±5 HRC

d ₁	axb		l ₂ +0.5 0	l ₁					Locking flat
	≥	± 0.01		≤	71	80	90	100	
				Price by piece in EUROS					
6	3,0	—	5,9	34,00	34,85	36,05	37,10	39,35	3,95
6.5	3,0	—	6,4	38,60	39,50	40,75	41,85	44,20	5,25
7	3,5	—	6,9	38,95	39,90	41,20	42,35	44,80	
7.5	3,0	—	7,4	39,30	40,30	41,65	42,85	45,40	
8	3,5	—	7,9	39,75	40,75	42,20	43,40	46,10	
8.5	4,0	—	8,4	40,15	41,20	42,60	43,85	46,60	
9	4,0	—	8,9	40,55	41,65	43,00	44,30	47,10	
9.5	4,5	—	9,4	40,95	42,10	43,40	47,75	47,60	
10	5,0	—	9,9	41,40	42,55	43,80	45,20	48,20	
10.5	5,5	—	10,4	41,90	43,10	44,40	45,85	49,00	
11	5,5	—	10,9	42,40	43,65	45,00	46,50	49,80	
11.5	6,0	—	11,4	42,90	44,20	45,60	47,15	50,60	
12	6,0	—	11,9	43,40	44,75	46,20	46,80	51,40	
12.5	7,0	—	12,4	43,90	45,30	46,80	48,45	52,20	
13	9,0	—	12,9	44,40	45,80	47,40	49,15	53,00	
13.5	9,0	—	13,4	44,95	46,40	48,10	49,90	53,90	
14	9,5	—	13,9	45,50	47,00	48,80	50,65	54,80	
14.5	9,5	—	14,4	46,05	46,60	49,50	51,40	55,70	

Punches with key-flat against surcharge.

Without detailed specification the key-flat is parallel to the major axis of surface a.

Intermediate diameters, other lengths and special materials e.g. ASP, CPM and Vanadis, are available on request. See page 2 for extra charges and discount.