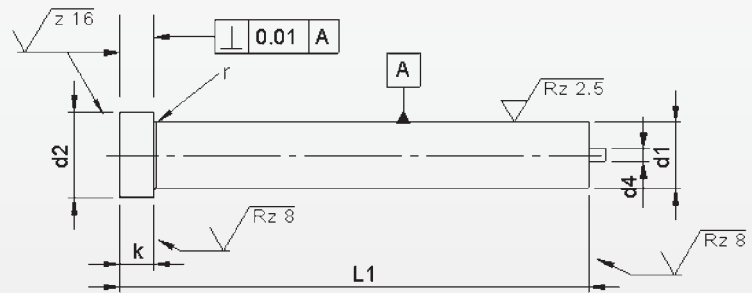
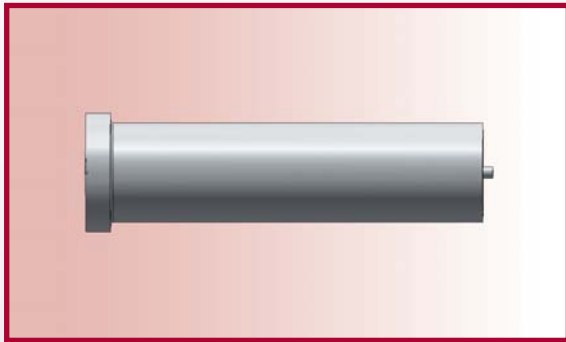


# Punches ISO 8020 / Type EK

With ejector



**Material:** HSS (1.3343)  
**Hardness:** Shaft: 64 ±2 HRC  
 Head: 50 ±5 HRC

d <sub>1</sub> m5	d <sub>2</sub> 0 -0.15	d <sub>4</sub>	k +0.2 +0.1	r +0.1 0	l <sub>1</sub> <sup>+0.5</sup> / <sub>+0.2</sub>				
					63/71	80	90	100	120
<b>Price by piece in EUROS</b>									
5	8	1	5	0.3	16,25	17,90	19,70	21,65	
6	9		5		16,05	17,70	19,45	21,40	
8	11	1,5	5		16,20	17,85	19,60	21,60	25,90
10	13		5		17,55	19,30	21,20	23,35	28,00
13	16	2,3	5	0.5	19,95	21,90	24,10	26,50	31,80
16	19		5		22,60	24,85	27,35	30,10	36,10
20	23		5		25,65	28,20	31,00	34,10	40,95
25	28		5		29,80	32,80	36,05	39,65	47,60
32	35	3	5		37,70	40,65	43,95	51,10	53,80
38	41		5		43,45	47,15	50,80	55,05	64,35

Intermediate diameters, other lengths and special materials e.g. ASP, CPM and Vanadis, are available on request.

**Extra charges and discounts:**

- 1 Pieces per dimension + 50%
- 2-3 Pieces per dimension + 25%
- 25 Pieces per dimension - 5%
- 50 Pieces per dimension - 7%
- 100 Pieces per dimension - 10%