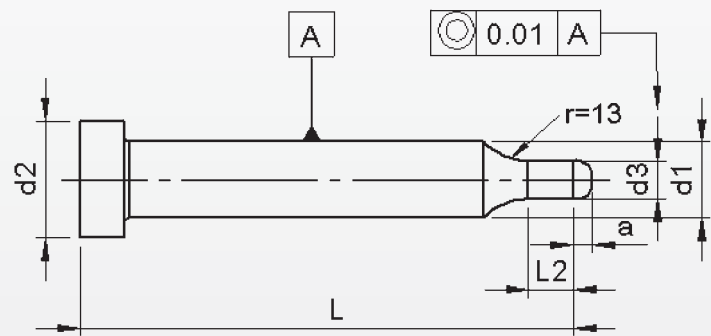


Punches ISO 8020 / type KPL

With pilots



Material: HSS (1.3343)

Hardness: Shaft: 64 ±2 HRC

Head: 50 ±5 HRC

d ₁	d ₃		a	l ₂	l+a					
					63/71	80	90	100	120	
m5	≥	^{+0.01} 0 -	≤		Price by piece in EUROS					
5	0.8	-	2.0	3.0	10	11,25	11,85	12,50	13,15	14,70
6	2.1	-	4.5	4.5	10	13,00	13,70	14,40	15,20	16,95
8	4.6	-	7.5	6.5	13	15,30	16,10	16,95	17,90	20,00
10	7.6	-	10.0	8.0	17	18,05	18,95	19,95	21,05	23,50
13	10.1	-	13.0	9.5	17	21,65	22,90	24,15	25,55	28,60
16	13.1	-	16.0	11.5	17	28,10	29,50	31,05	32,80	36,55
20	16.1	-	20.0	13.5	17	36,50	38,25	40,15	42,20	46,85
25	20.1	-	25.0	13.5	17	46,30	49,05	50,80	53,40	59,15

Intermediate diameters, other lengths and special materials e.g. ASP, CPM and Vanadis, are available on request.

Extra charges and discounts:

- 1 Pieces per dimension + 50%
- 2-3 Pieces per dimension + 25%
- 25 Pieces per dimension - 5%
- 50 Pieces per dimension - 7%
- 100 Pieces per dimension - 10%