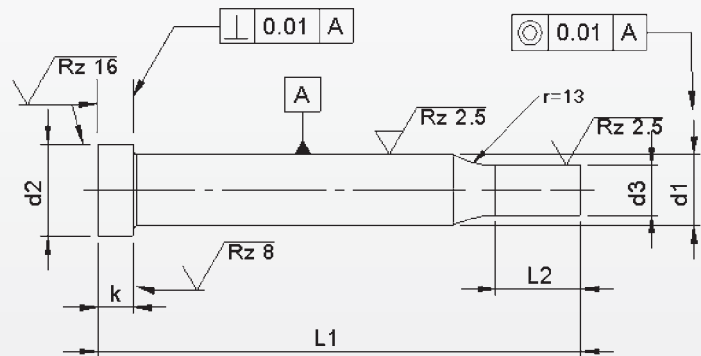
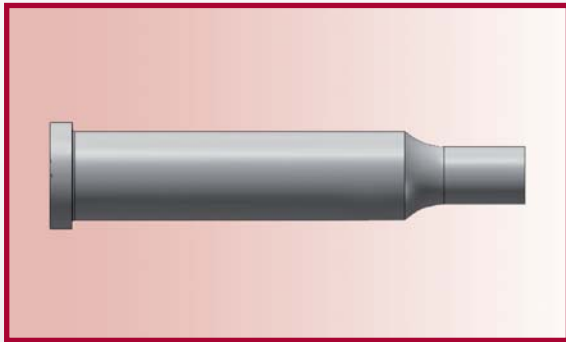


Punches ISO 8020 / type KP

With reduced shaft 'Round'



Material: HSS (1.3343)
Hardness: Shaft: 64 ± 2 HRC
 Head: 50 ± 5 HRC

d_1	d_3		l_2	$l_1 \begin{smallmatrix} +0.5 \\ +0.2 \end{smallmatrix}$					
				63/71	80	90	100	120	
m5	\geq	j6	\leq	Price by piece in EUROS					
3	1.6	-	2.9	7	8,25	8,80	9,70		
4	1.6	-	3.9	10	8,25	8,80	9,70	10,55	
5	2.5	-	4.9	10	8,50	9,10	9,75	10,40	11,95
6	3.0	-	5.9	10	9,80	10,50	11,20	12,00	13,75
8	4.0	-	7.9	13	11,55	12,35	13,20	14,15	16,25
10	5.0	-	9.9	17	13,60	14,50	15,50	16,60	19,05
13	9.0	-	12.9	17	16,55	17,80	19,05	20,45	23,50
16	12.0	-	15.9	17	21,15	22,55	24,10	25,85	29,60
20	16.0	-	19.9	17	26,85	28,60	30,50	32,55	37,20
25	20.0	-	24.9	17	33,85	36,00	38,35	40,95	46,70
32	27.0	-	31.9	17	44,05	46,90	50,00	53,45	61,05
38	33.0	-	37.9	17	52,00	55,50	59,35	63,55	73,00

Intermediate diameters, other lengths and special materials e.g. ASP, CPM and Vanadis, are available on request.

Extra charges and discounts:

- 1 Pieces per dimension + 50%
- 2-3 Pieces per dimension + 25%
- 25 Pieces per dimension - 5%
- 50 Pieces per dimension - 7%
- 100 Pieces per dimension - 10%