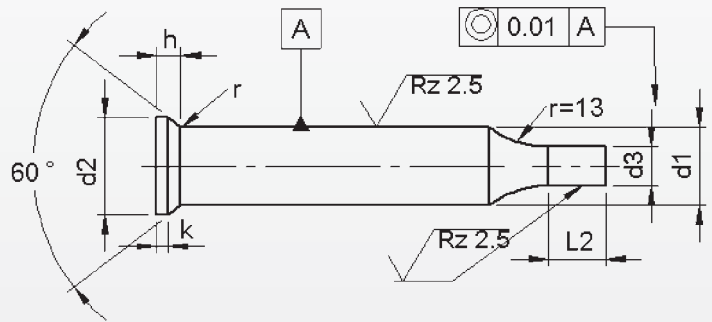
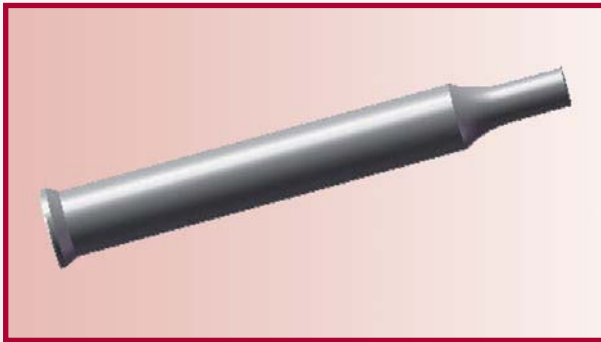


# Reduced shaft 'Round' DIN 9861



d <sub>1</sub>	d <sub>3</sub>		l <sub>2</sub> <sup>0.5</sup> <sub>0</sub>				Price by piece in EUROS/punche not include
	≥	h6 ≤	7	10	13	17	
1.5	0.5	1.4	•				2,50
2	0.5	1.9	•				2,50
3	1.6	2.9	•				2,50
4	1.6	3.9		•			2,50
5	2.5	4.9		•			2,75
6	3	5.9		•			3,20
8	4	7.9			•		3,75
10	5	9.9				•	4,45
13	9	12.9				•	5,10
16	12	15.9				•	6,95
20	16	19.9				•	9,65
25	20	24.9				•	12,45
32	25	31.9				•	15,70
38	30	37.9				•	17,05