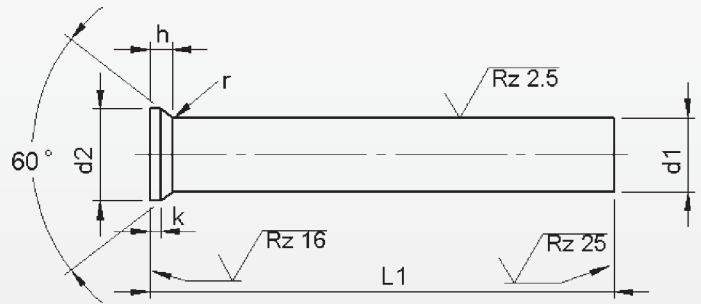
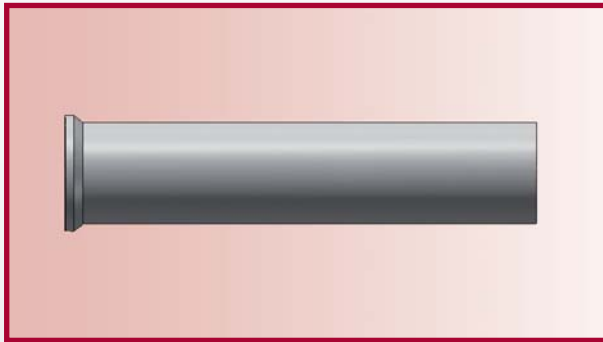


Punches

DIN 9861 HSS



Material: HSS (1.3343)
Hardness: Shaft: 64 ±2 HRC
 Head: 50 ±5 HRC

d ₁ h6	d ₂ +0.05 -0.05	k +0.2 0	l ₁ ^{+0.5} ₀					
			71	80	90	100	120	150
Price by piece in EUROS								
0.5	0.9	0.2	4,65					
0.6	1.1		4,65					
0.7	1.3		4,40					
0.8	1.4	0.4	4,40					
0.9	1.6		4,40					
1.0	t/m 1.1 1.8	0.5	3,60	4,05	4,50	5,05		
1.2	t/m 1.3 2.0		3,60	4,05	4,50	4,05		
1.4	t/m 1.5 2.2		3,60	4,05	4,50	4,05		
1.6	t/m 1.7 2.5		3,60	4,05	4,50	4,05		
1.8	t/m 1.9 2.8		3,60	4,05	4,50	4,05		
2.0			3,30	3,60	4,15	4,55	6,55	
2.1	t/m 2.2 3.2		3,30	3,60	4,15	4,55	6,55	
2.3	t/m 2.5 3.5		3,30	3,60	4,15	4,55	6,55	
2.6	t/m 2.9 4.0		3,30	3,60	4,15	4,55	6,55	
3.0	t/m 3.4 4.5		3,30	3,60	4,15	4,55	6,55	
3.5	t/m 3.9 5.0		3,60	4,05	4,50	5,05	7,20	
4.0	t/m 4.4 5.5		3,30	3,60	4,15	4,55	6,55	
4.5	t/m 4.9 6.0		3,60	4,05	4,50	5,05	7,20	10,75
5.0	t/m 5.4 6.5		3,80	4,20	4,65	5,30	7,50	11,25
5.5	t/m 5.9 7.0		3,75	4,20	4,65	5,30	7,50	11,25
6.0	t/m 6.4 8.0	3,75	4,20	4,65	5,30	7,50	11,25	
6.5	+ 7.0 9.0	4,15	4,45	5,10	5,70	8,25	12,35	
7.5	+ 8.0 10.0	4,25	4,60	5,35	5,90	8,45	12,65	
8.5	+ 9.0 11.0	4,65	5,15	5,75	6,50	9,25	13,85	
9.5	+ 10.0 12.0	5,50	6,10	6,85	7,70	10,95	16,40	
10.5	+ 11.0 13.0	6,15	6,70	7,60	8,60	12,25	18,35	
11.5	+ 12.0 14.0	6,70	7,40	8,35	9,40	13,35	20,00	
12.5	+ 13.0 15.0	8,20	8,95	10,20	11,40	16,35	24,55	

Intermediate diameters, other lengths and special materials e.g. ASP, CPM and Vanadis, are available on request.

See page 2 for extra charges and discount.