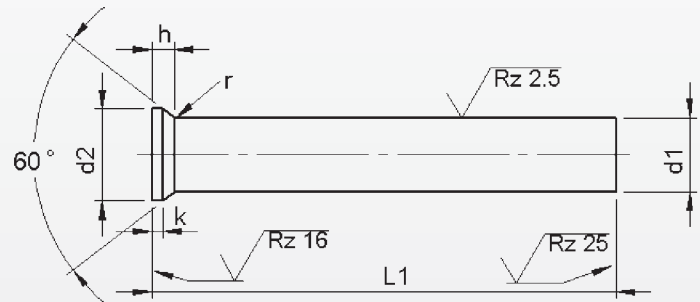
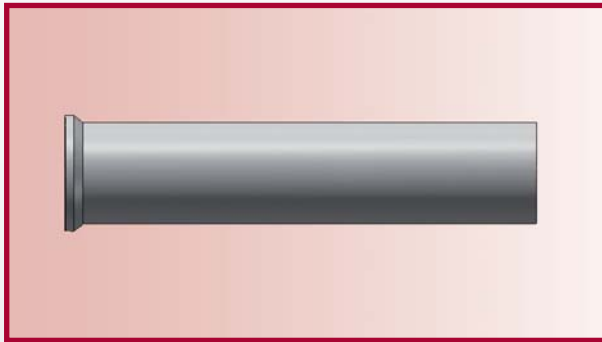


Punches

DIN 9861 HWS



Material: HWS (1.2379)
Hardness: Shaft: 62 ±2 HRC
 Head: 50 ±5 HRC

DISCONTINUED

d ₁	d ₂	k	l ₁ ^{+0.5} ₀					
			71	80	90	100	120	150
h6	+0.05 -0.05	+0.2 0	Price by piece in EUROS					
0.5	0.9	0.2	3,95					
0.6	1.1		3,95					
0.7	1.3		3,75					
0.8	1.4	0.4	3,75					
0.9	1.6		3,75					
1.0	t/m 1.1	0.5	2,95	3,45	3,90	4,40		
1.2	t/m 1.3		2,95	3,45	3,90	4,40		
1.4	t/m 1.5		2,95	3,45	3,90	4,40		
1.6	t/m 1.7		2,95	3,45	3,90	4,40		
1.8	t/m 1.9		2,95	3,45	3,90	4,40		
2.0	3.0		2,75	3,00	3,45	3,85	5,55	
2.1	t/m 2.2		2,75	3,00	3,45	3,85	5,55	
2.3	t/m 2.5		2,75	3,00	3,45	3,85	5,55	
2.6	t/m 2.9		2,75	3,00	3,45	3,85	5,55	
3.0	t/m 3.4		2,75	3,00	3,45	3,85	5,55	
3.5	t/m 3.9	1.0	3,10	3,35	3,80	4,35	6,15	
4.0	t/m 4.4		2,85	3,20	3,55	4,00	5,70	8,50
4.5	t/m 4.9		3,10	3,30	3,70	4,35	6,15	9,20
5.0	t/m 5.4		3,10	3,30	3,70	4,35	6,15	9,20
5.5	t/m 5.9		3,10	3,35	3,95	4,35	6,15	9,25
6.0	t/m 6.4		3,10	3,35	3,95	4,35	6,15	9,25
6.5	+ 7.0		3,30	3,60	4,10	4,60	6,55	9,80
7.5	+ 8.0		3,45	3,75	4,35	4,75	6,85	10,25
8.5	+ 9.0		3,85	4,30	4,80	5,45	7,70	11,50
9.5	+ 10.0		4,65	5,10	5,80	6,55	9,25	13,85
10.5	+ 11.0	5,10	5,70	6,40	7,20	10,20	15,30	
11.5	+ 12.0	5,80	6,35	7,20	8,10	11,60	17,40	
12.5	+ 13.0	6,00	6,75	7,65	8,50	12,00	18,00	

Intermediate diameters, other lengths and special materials e.g. ASP, CPM and Vanadis, are available on request.

See page 2 for extra charges and discount.