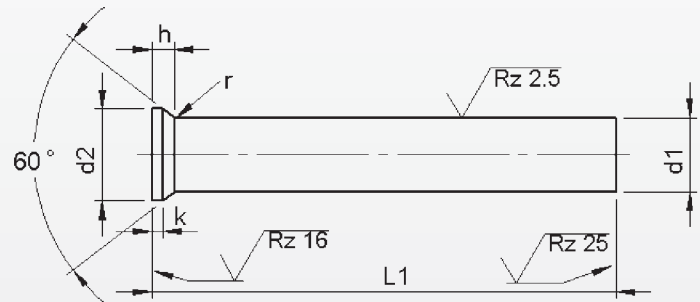
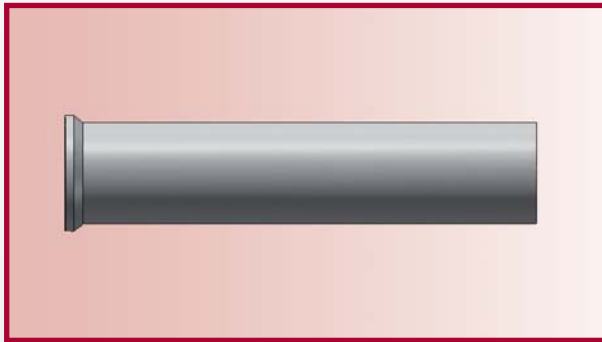


Punches

DIN 9861 HWS



Material: HWS (1.2379)
Hardness: Shaft: 62 ±2 HRC
 Head: 50 ±5 HRC

DISCONTINUED

d ₁	h6	d ₂	k	l ₁ ^{+0.5} ₀						
				71	80	90	100	120	150	
				Prices by piece in EUROS						
13.5	+	14.0	16.0	7,00	7,75	8,75	9,85	14,00	21,00	
14.5	+	15.0	17.0	8,40	9,25	10,55	11,80	16,75	25,15	
15.5	+	16.0	18.0	9,35	10,35	11,70	13,10	18,65	28,00	
16.5		19.0	1.5	9,70	10,65	12,10	13,60	19,35	29,05	
17.0		19.5		9,70	10,65	12,10	13,60	19,35	29,05	
17.5		20.0		10,40	11,40	13,85	14,60	20,75	31,15	
18.0		20.5		10,40	11,40	13,85	14,60	20,75	31,15	
18.5		21.0		11,10	12,20	14,30	15,55	22,20	33,25	
19.0		21.5		11,10	12,20	14,30	15,55	22,20	33,25	
19.5		22.0		11,80	13,00	14,75	16,50	23,60	35,35	
20.0		22.5		11,80	13,00	14,75	16,50	23,60	35,35	
20.5		23.0		2.0	12,50	13,75	15,65	17,50	25,00	37,40
21.0		23.5			12,50	13,75	15,65	17,50	25,00	37,40
21.5		24.0	13,20		14,55	16,50	18,45	26,40	39,60	
22.0		24.5	13,20		14,55	16,50	18,45	26,40	39,60	
22.5		25.0	13,90		15,25	17,40	19,50	27,80	41,70	
23.0		25.5	13,90		15,25	17,40	19,50	27,80	41,70	
23.5		26.0	14,60		16,05	18,25	20,45	29,20	43,80	
24.0		26.5	14,60		16,05	18,25	20,45	29,20	43,80	
24.5		27.0	15,30		16,85	19,15	21,45	30,60	45,90	
25.0		27.5	15,30		16,85	19,15	21,45	30,60	45,90	

Intermediate diameters, other lengths and special materials e.g. ASP, CPM and Vanadis, are available on request.

Extra charges and discounts:

- 1 Pieces per dimension + 50%
- 2-3 Pieces per dimension + 25%
- 25 Pieces per dimension - 5%
- 50 Pieces per dimension - 7%
- 100 Pieces per dimension - 10%